

# GLTN PARTNERS' LAND TOOLS REVIEW WORKSHOP

Venue: Room CR-9, UN-Habitat HQ, Nairobi  
5 and 6 September 2022  
11h00 – 15h30 EAT  
(Hybrid format: online and in-person)

## TENURE-RESPONSIVE LAND USE PLANNING (TR-LUP): Progress review

**Uchendu Eugene Chigbu**

Namibia University of Science and Technology  
Windhoek, Namibia  
echigbu@nust.na



NAMIBIA UNIVERSITY  
OF SCIENCE AND TECHNOLOGY



1

## CONTENT

- TR-LUP overview
- Potential application
- Progress in development and roll-out
- Field testing
- Support needed



NAMIBIA UNIVERSITY  
OF SCIENCE AND TECHNOLOGY



2

## TR-LUP: WHAT IS IT ALL ABOUT?

- Land use planning is rarely a neutral process, stakeholders often use it to control access to, ownership of and use of land.
- **TR-LUP is a participatory, tenure-focused, gender-sensitive and pro-poor tool (that is based on constantly counterchecked processes and flexible monitoring) to ensure sustainable land use and secure land tenure.**
- TR-LUP is one of (if not the most) the flexible and expansive land tools of the GLTN.
  - Every other GLTN tool can be directly incorporated into the TR-LUP, vice versa.
  - It deals with the three key critical land issues of the GLTN: Land use, tenure security and capacity development.
  - It relies on recordation but operates beyond documentation with focus on human-to-human and human-to-land relationships.

3

## TR-LUP INCORPORABILITY & OPERABILITY WITH OTHER GLTN LAND TOOLS

	GLTN tools of incorporability	GLTN tools of operability	Incorporability & operability
TENURE RESPONSIVE LAND USE PLANNING	<ol style="list-style-type: none"> <li>1. Customary Land Tenure</li> <li>2. Land Records System for the Poor</li> <li>3. Costing and Financing of Land Administration Services Transparency in Land Administration</li> <li>4. Fit-For-Purpose Land Administration</li> <li>5. Innovative Land and Property Taxation</li> <li>6. Land Based Financing</li> <li>7. Valuation of Unregistered Land and Properties</li> <li>8. Land and disaster</li> <li>9. Land monitoring and indicators</li> </ol>	<ol style="list-style-type: none"> <li>1. Gender</li> <li>2. Youth</li> <li>3. Land and conflict</li> <li>4. Grassroots</li> </ol>	<ol style="list-style-type: none"> <li>1. Land Readjustment</li> <li>2. Citywide Slum Upgrading</li> <li>3. Land Use Planning</li> <li>4. Citywide Planning</li> <li>5. The Continuum of Land Rights</li> <li>6. The Participatory Enumeration for Tenure Security</li> <li>7. The Social Tenure Domain Model (STDM)</li> </ol>

4

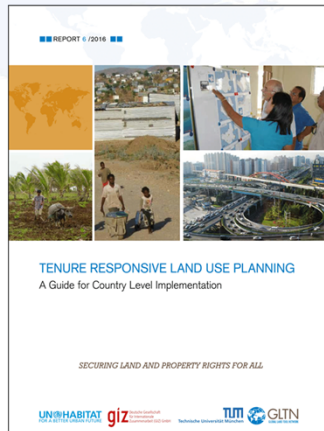
## TR-LUP IN GLOBAL DEVELOPMENT AGENDAS

SDGs	Challenge	NUA (articles)	TR-LUP
1	No poverty	25	Land-use, recordation & women's land rights
2	Zero hunger	5 & 123	Land-use, recordation & women's land rights
3	Good health & well-being	95	Land-use, recordation & women's land rights
4	Quality of education	61	Land-use, recordation & women's land rights
5	Gender equality	5, 11 & 14	Land-use, recordation & women's land rights
6	Clean water & sanitation	73 & 120	Land-use & land/water access
7	Affordable and clean energy	54, 75 & 121	Land-use
8	Decent work & economic growth	43-44 & 56-60	Land-use, recordation & women's land rights
9	Industry, innovation & infrastructure	45	Land-use, secure investment, recordation & women's land rights
10	Reduced inequality	10-18, 33, 36, 40, 62 & 89	Land-use & women (and vulnerable) land rights
11	Sustainable cities & communities	30, 34, 37, 46, 49, 51-53, 55, 63, 66-67, 79, 88, 90-92, 94 & 96-102	Land-use, recordation, women (and vulnerable) land rights & property formation
12	Responsible consumption	10, 13-14, 45, 63, 69, 75, 95 & 137	Responsible use of land
13	Climate action	63, 67-68, 79-80, 101, 115, 143 & 165	Land and natural resource uses
14	Life below water	13 & 72	Governance of tenure on water and fisheries
15	Life on land	13-14, 19, 34, 35, 37, 49, 54, 64, 70 & 88	Land-use, land registration and governance
16	Peace & justice	13, 37 & 40	Secure tenure, recordation & women's land rights
17	Partnership for goals	21, 92, 96, 126, 149, 153-154, 169 & 172	Collaborative planning across sectors



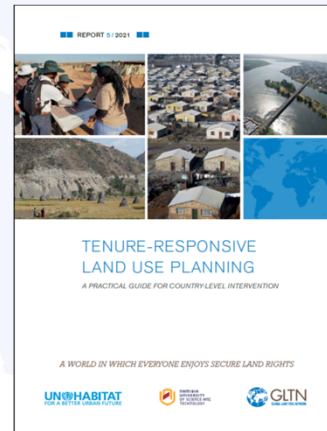
5

## EVOLUTION: FROM POLICY TO OPERATION



Theory

From policy to practice

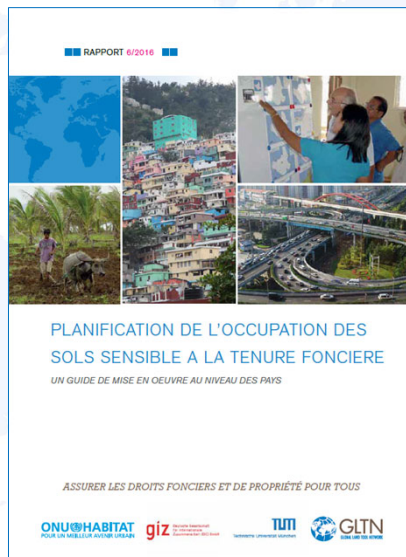


Practice



6

## WIDENING GEOLINGUISTIC SCOPE OF TR-LUP



**UN-HABITAT**  
FOR A BETTER URBAN FUTURE

 **NAMIBIA UNIVERSITY**  
OF SCIENCE AND TECHNOLOGY

 **GLTN**  
GLOBAL LAND TOOL NETWORK

7

## FIELD TESTING

### Comprehensive testing: “LAND-at-scale” project in Uganda

- Uganda has an ambitious agenda to improve tenure security, aiming to title all land by 2040. Over 80% of the land is still accessed through customary land tenure systems. Across rural areas, it is estimated that almost 1 in 4 farms is in some sort of dispute over land.
- Scaling up community-based land registration and LUP on customary land in Uganda
- Integrating TR-LUP into customary land certification and land use planning.

### Restricted testing: Operationalizing STDM and TR-LUP in Okahandja municipality in Namibia.

- Undertaking a short situational analysis on the land tenure situation and land administration capacities in close collaboration with the NUST and the Okahandja Municipality.

**UN-HABITAT**  
FOR A BETTER URBAN FUTURE

 **NAMIBIA UNIVERSITY**  
OF SCIENCE AND TECHNOLOGY

 **GLTN**  
GLOBAL LAND TOOL NETWORK

8

## POSSIBLE EFFORTS TO DEPLOYMENT

More partners should be involved and take the tools forward in different ways: testing, training, curriculum, research, promotion, etc...

- ITC & TUM have been teaching TR-LUP in classroom settings.
- NUST has been doing this in the classroom setting for the past two years.
- NUST has promoted the tool at the National Forestry Conference July 2022 in Namibia as an entry point into the forestry sector of Namibia. Ongoing collaborations with the Hanns Seidel Foundation, Namibia.
- **TR-LUP is deployable beyond the land administration, into the mining, forestry, water and other land-use related sectors.**

9

## LESSONS & CHALLENGES

**Too early for practical lessons. However, the emerging lesson is that:**

- The GLTN can influence the TR-LUP process through:
  - Community participation
  - Mapping, etc.

**The limitations**

- LUP is always dictated by law/regulations – this can pose limitation.
- Governments decide on the final product.

10

## GAPS AND SUPPORT NEEDED

- **No TR-LUP training manual:** despite that GLTN partners have the capacity to produce one if supported by the Secretariat.
  - MUST trained stakeholders from Uganda in March 2022.
  - Ongoing efforts in Uganda to test the tool within the land at scale project is an opportunity to develop a “TR-LUP training manual.”
  - Partners (especially the Research and Training Cluster) are open to contribute in-kind, but the GLTN must invest its fund in such an initiative.
- The UN-Habitat/GLTN to do more engage its consultant agencies to do more in promoting land tools (as per AoC and other forms of motivations).
- More investment from GLTN is needed to pilot test and learn. There is no better time to do this than now.

## THANKS FOR LISTENING